

MODEL:

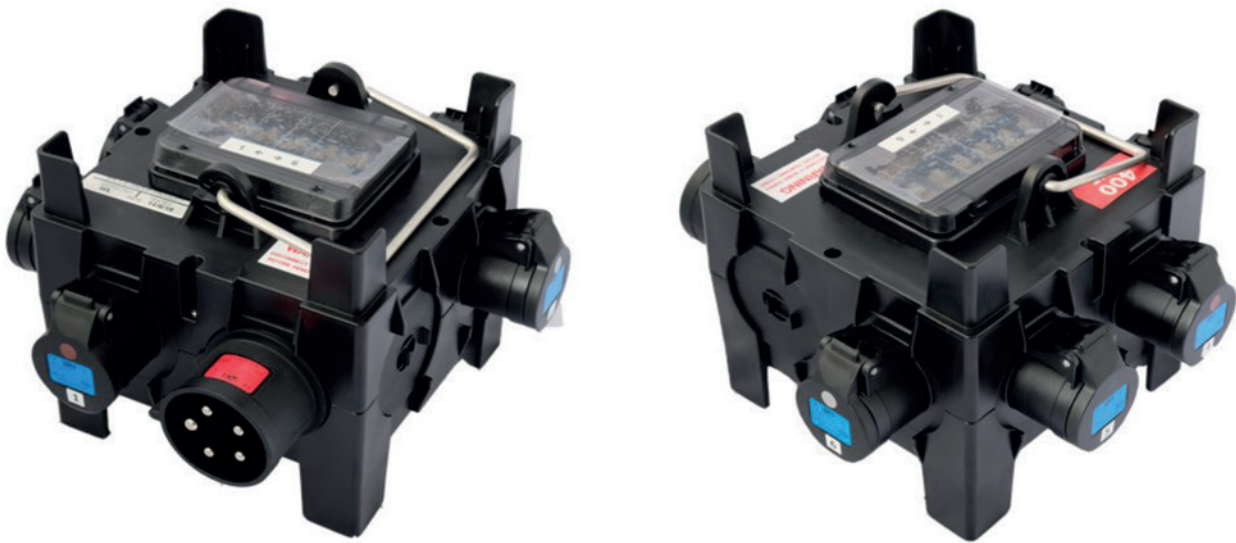
9030572 - MIDNIGHT IMST DISTRIBUTION UNIT



DISTRIBUTION BOARDS

TECHNICAL DATA SHEET

INDUSTRIAL PLUGS & SOCKETS | SITE ELECTRIC | OUTDOOR EVENTS | FILM & TV | FESTOON & PORTABLE



Enclosure

Thermoplastic insulated shock -resistant polyamide IP44.

Incoming

1 x 32A 230V 1p+n+e IP44 appliance inlet

Outgoing

1 x 32A 230V 1p+n+e IP44 socket

4 x 16A 230V 1p+n+e IP44 sockets

Protection

1 x 32a 30mA 2p Type C RCBO

4 x 16A 1p Type C MCB

Overall Dimensions & Weight

Depth (D) = 197mm Width (W) = 197mm

Height (H) = 200mm

Weight = 2.7kg

Head Office

Falcon Tower Crane Services Ltd
Shipdham, Norfolk, IP25 7SD

+44 1706 397086

enquiries@falconpowergeneration.co.uk
www.falconpowergeneration.co.uk

